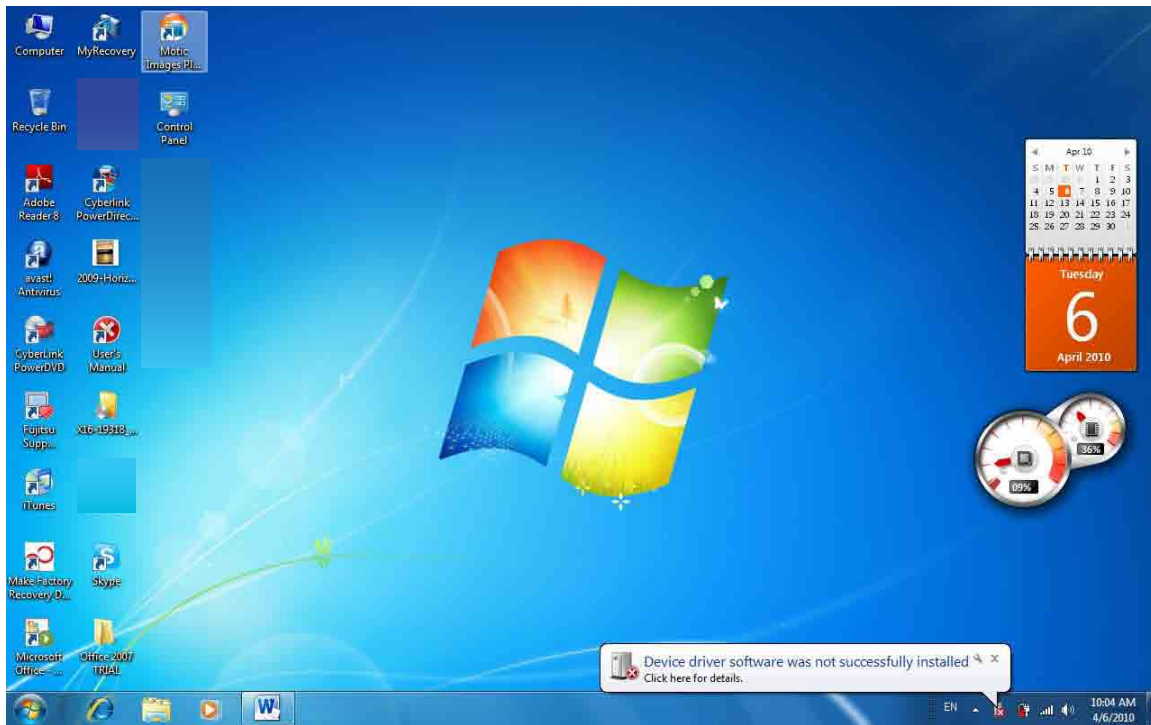
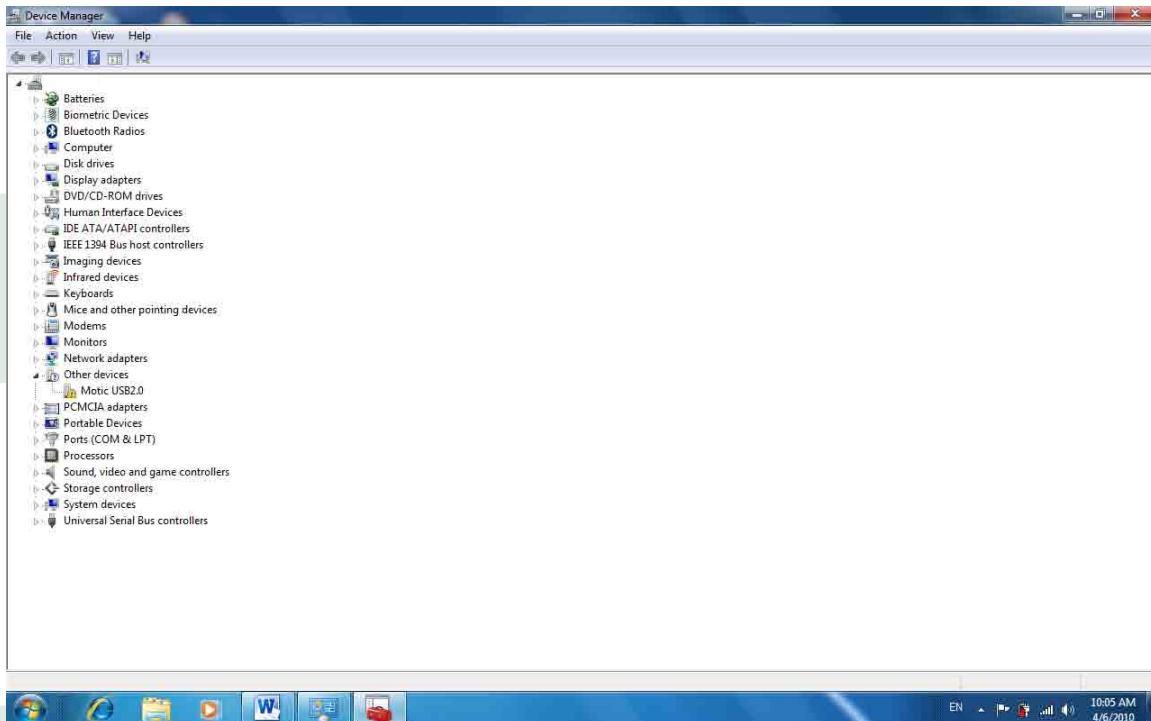


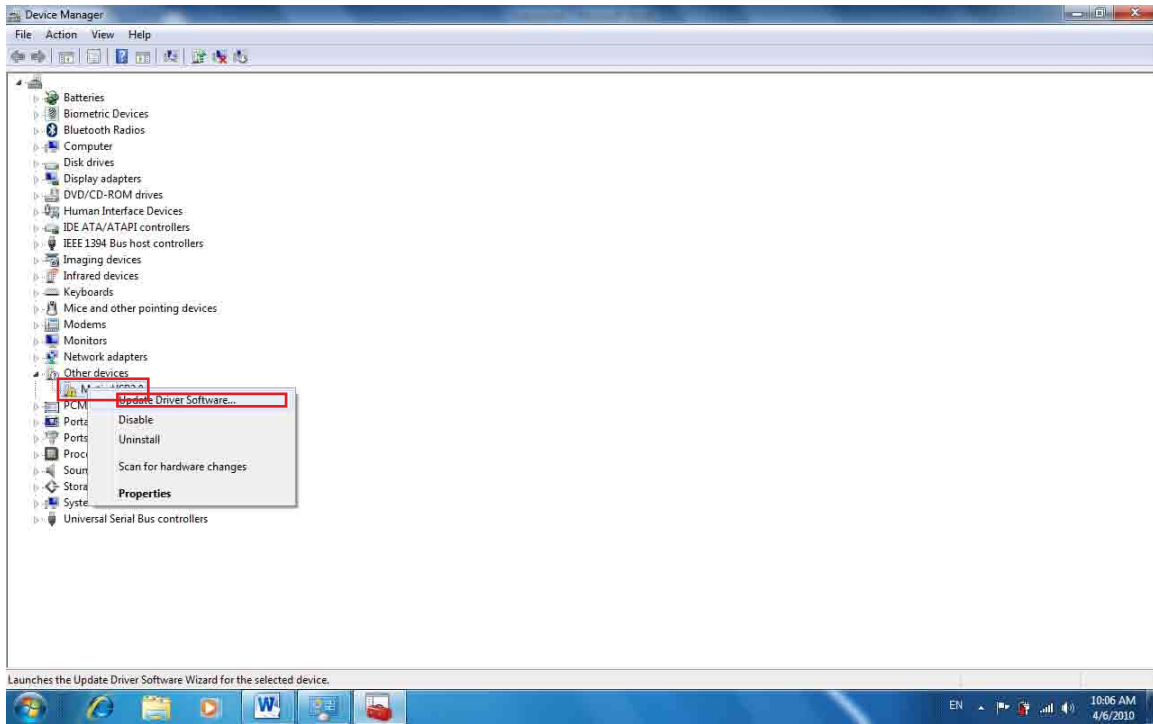
Manual driver software installation instruction for Moticam in Windows 7



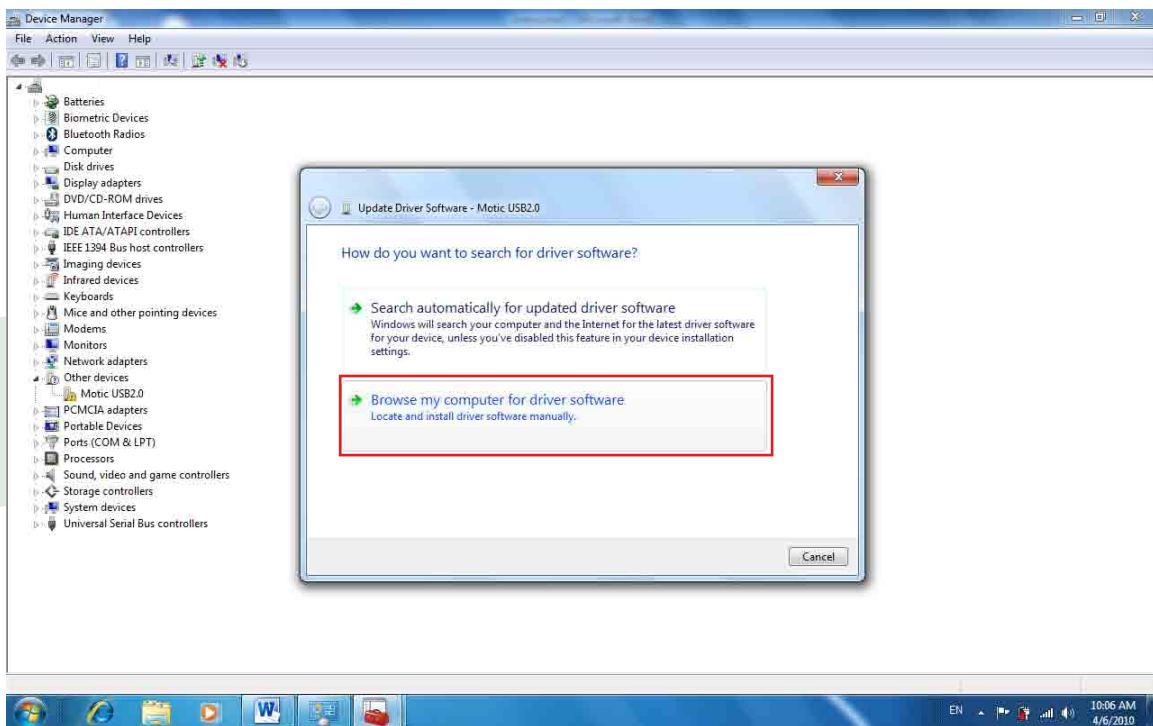
If you encounter a problem with the Moticam driver software installation in Windows 7, please follow the below steps to install the software driver manually. Please make sure the Motic Images Plus software CD is in the CD Rom.



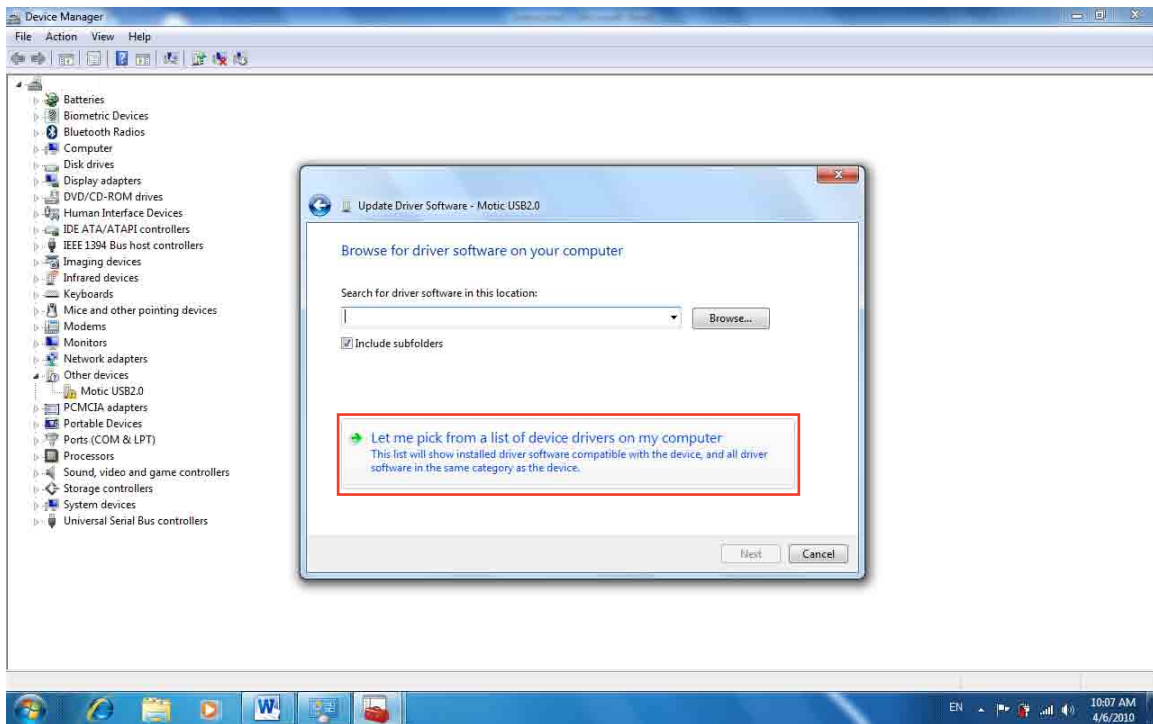
Go to Device Manager (Right click My Computer> Properties or go to Control Panel> System)



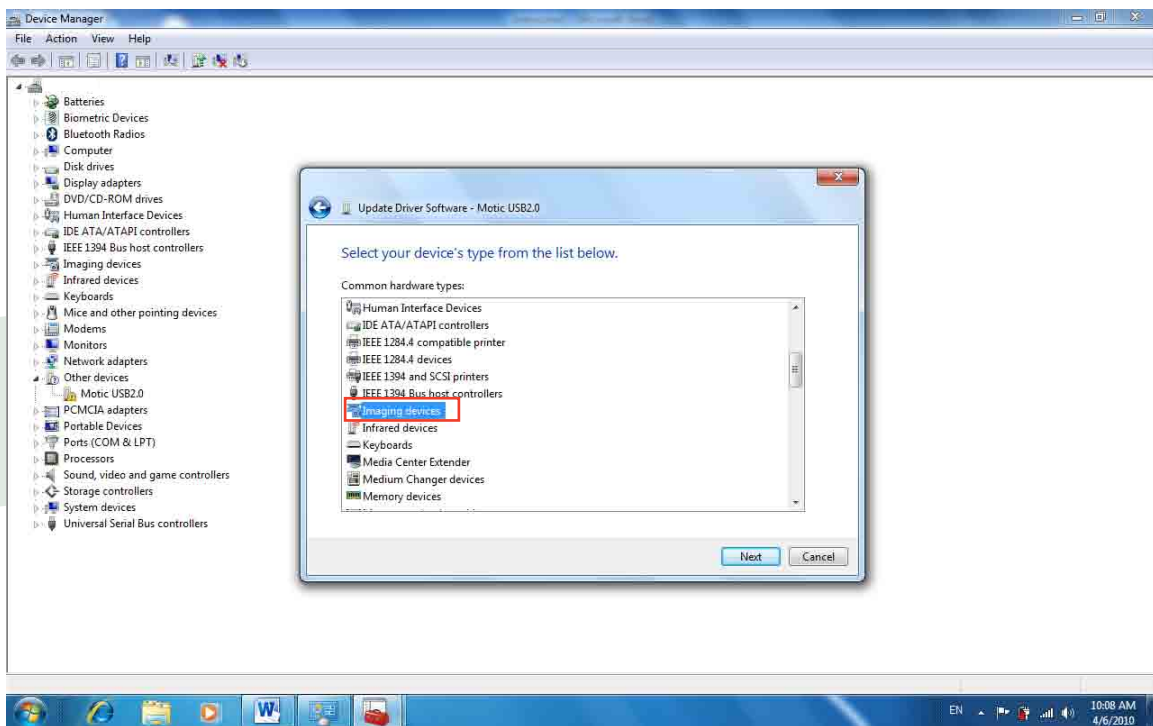
Right click on the Motic USB2.0 driver shown under Other devices, select the option Update Driver Software ...



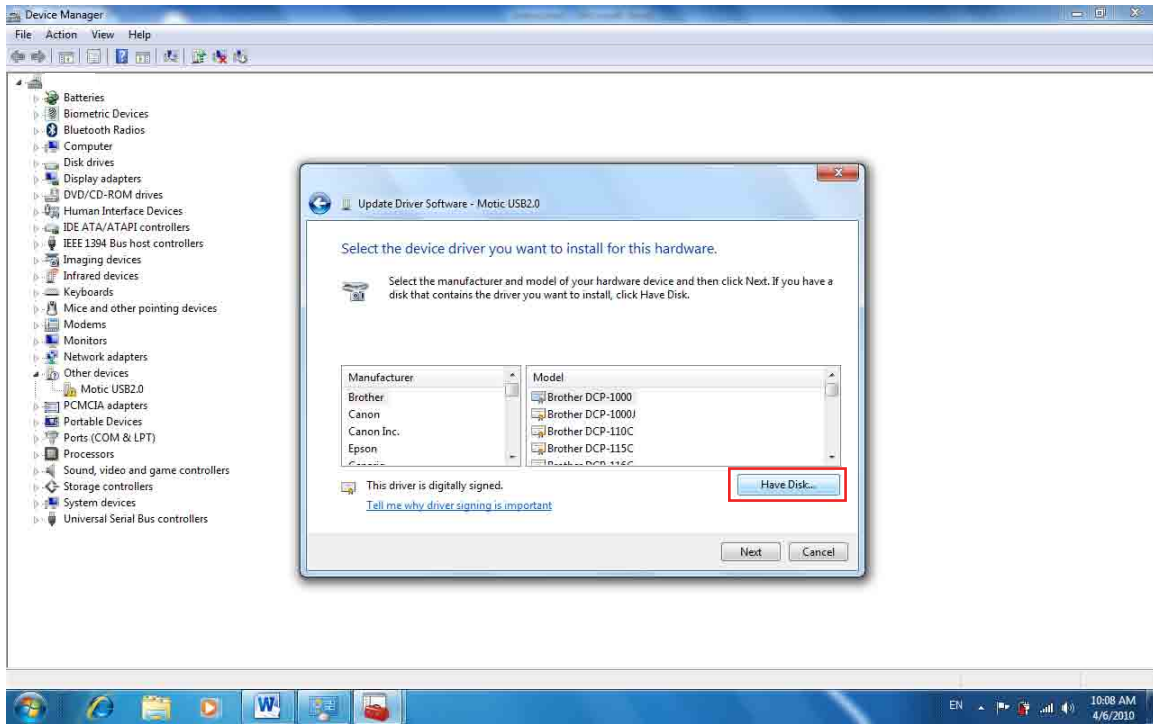
Select Browse my computer for driver software to install the driver software manually



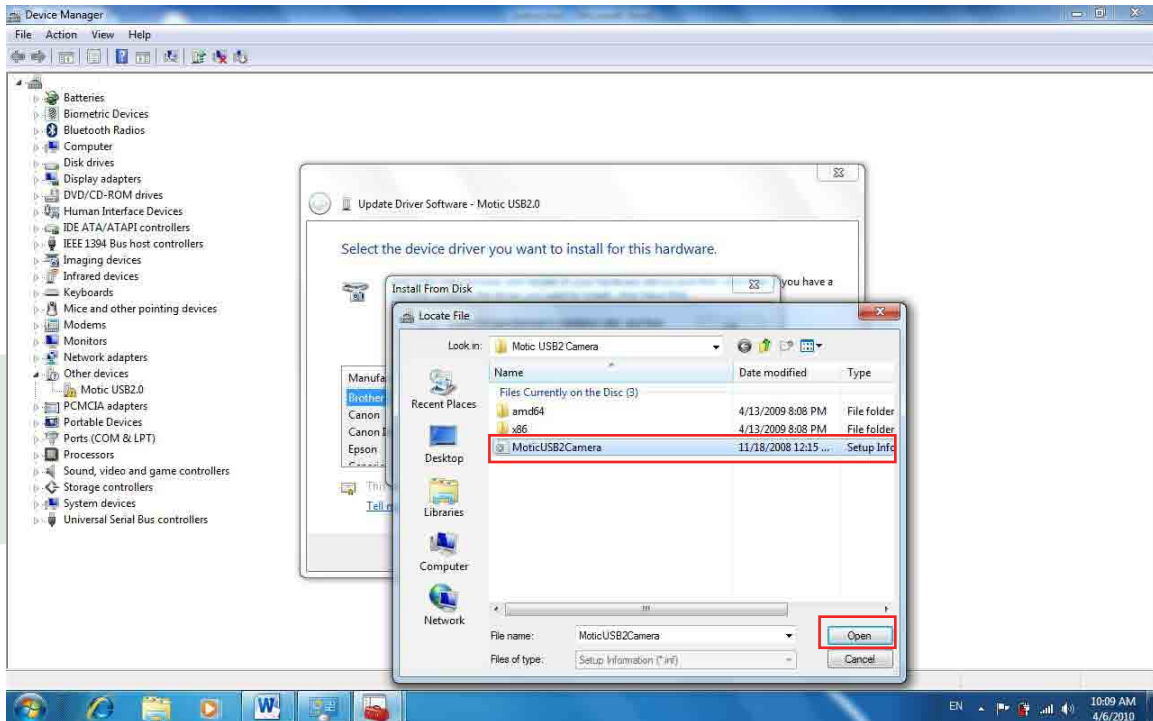
Locate the driver software manually by selecting Let me pick a list of device drivers on my computer



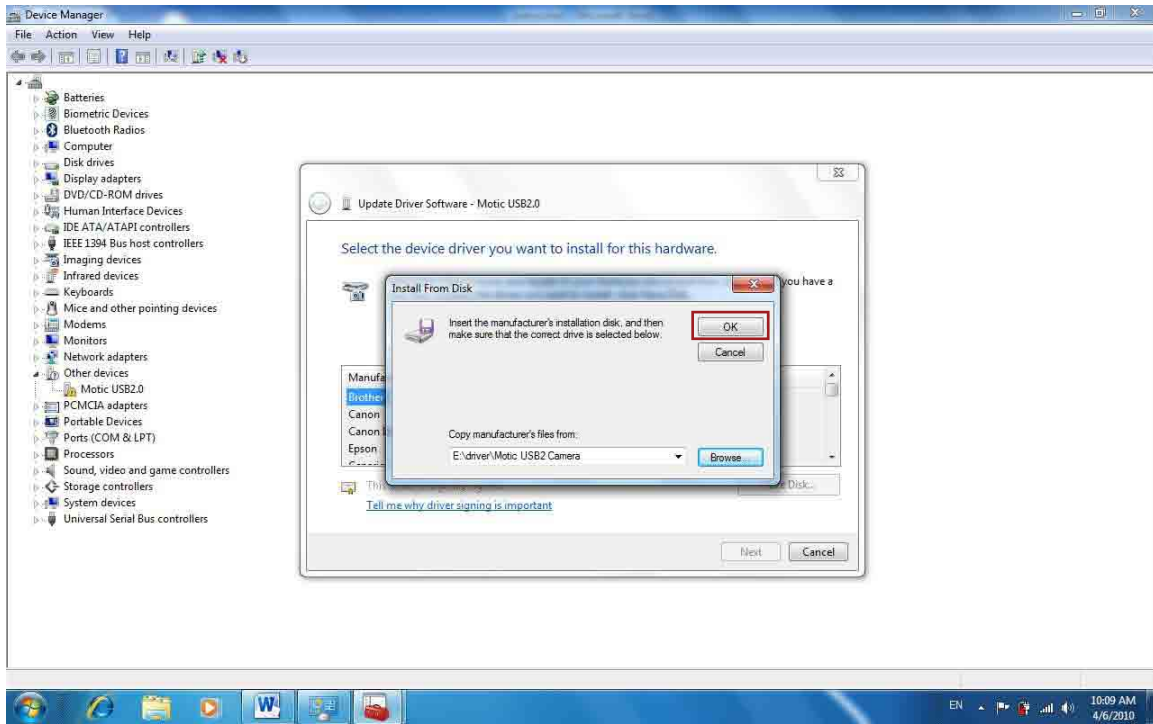
Select Imaging devices from the Common hardware types list



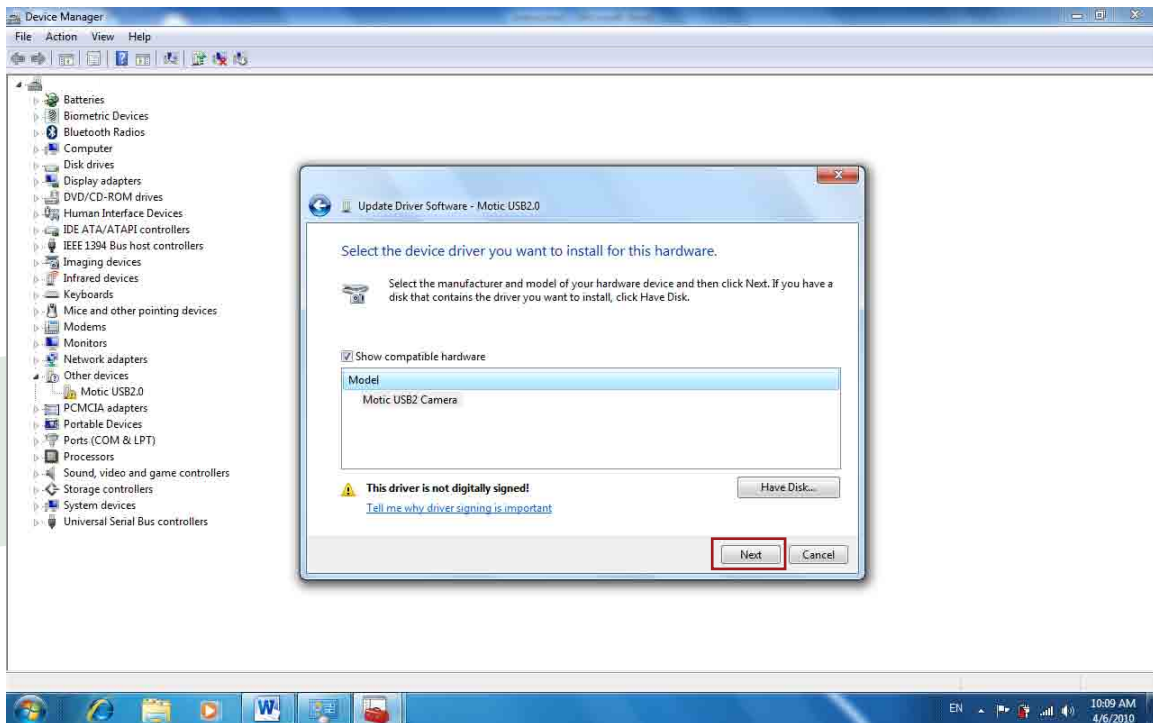
Click Have Disk...to select locate the driver software from the Motic Images Plus CD



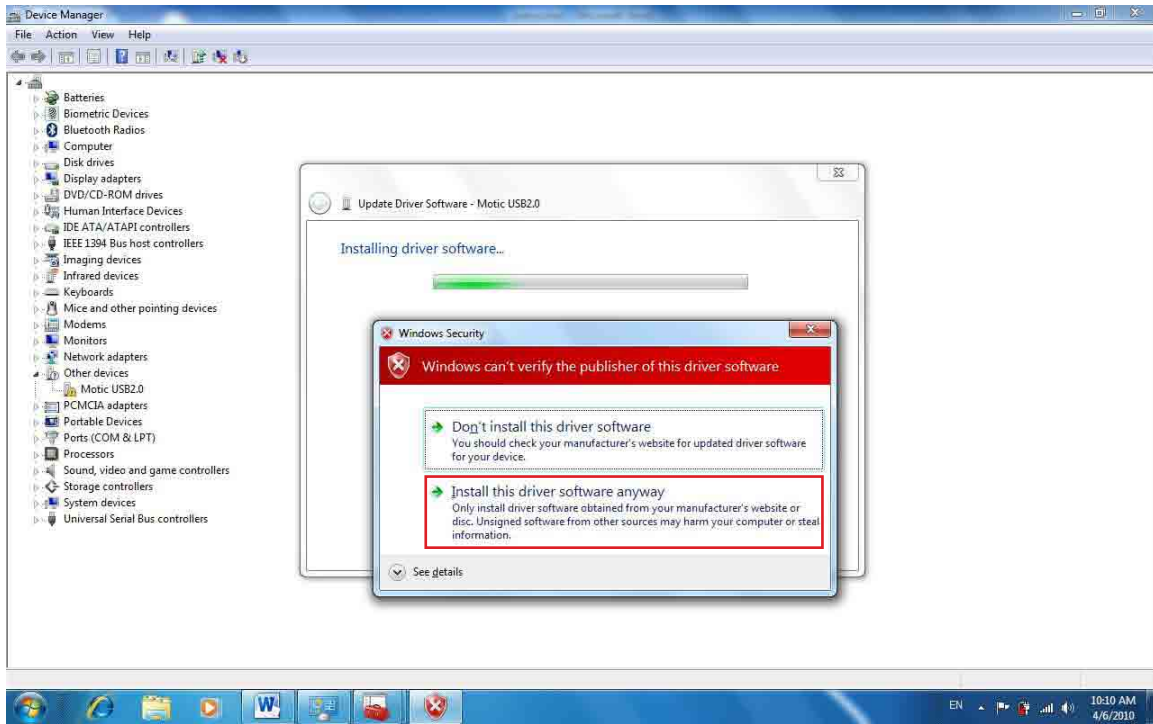
Locate the driver software file from the path CD Rom:\driver\Motic USB2 Camera\MoticUSB2Camera, click Open



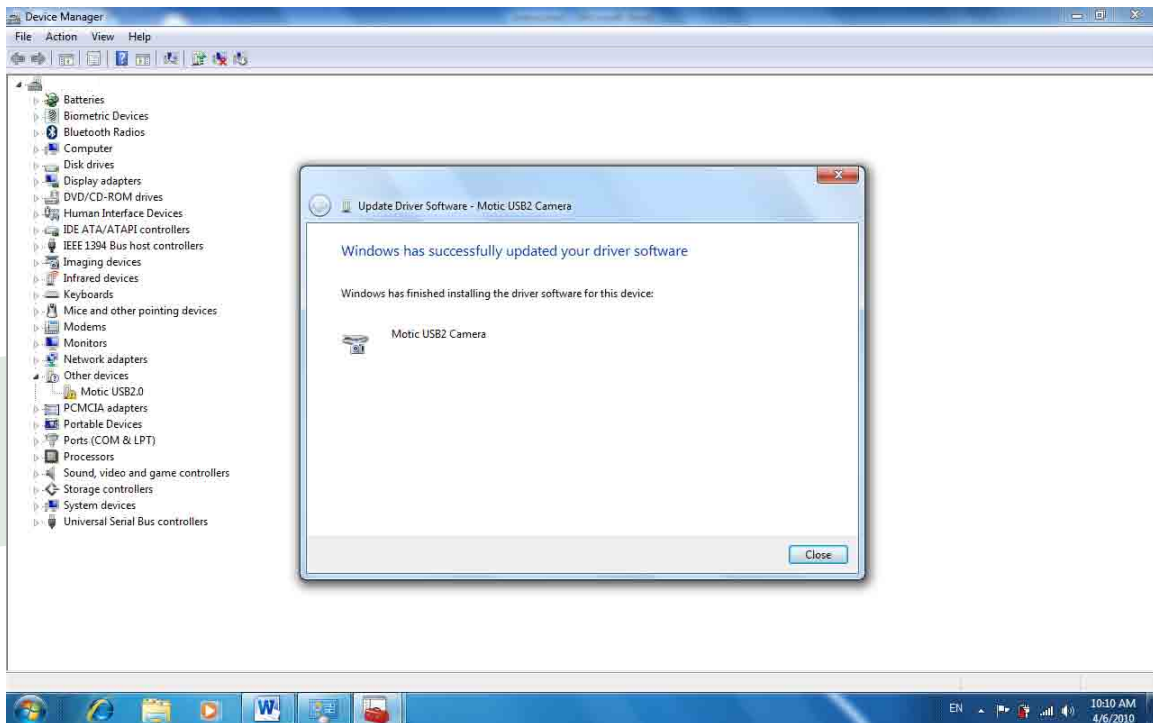
Click OK to proceed the driver software installation



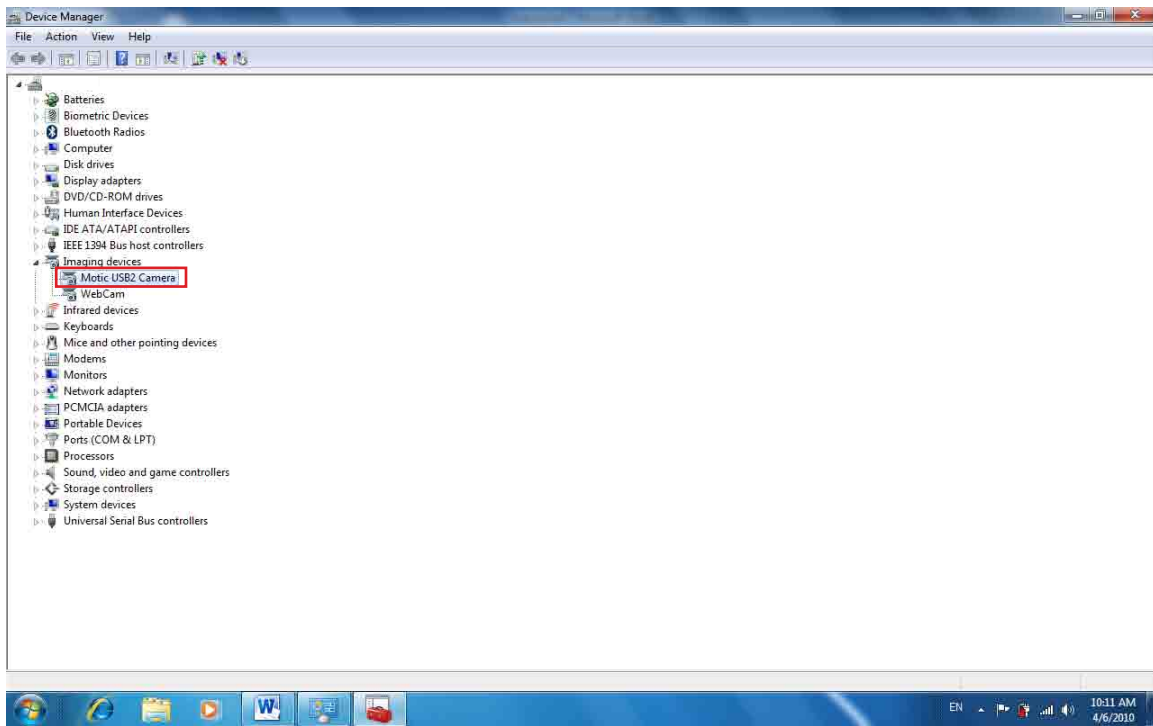
Click Next to start the driver software installation



Select the option Install this driver software anyway



The Driver for your Moticom is installed successfully



The Motic USB2 Camera device is shown working properly in the Device Manager list